



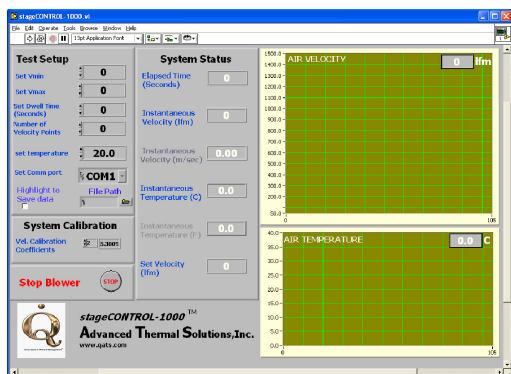
CLWTC-1000

AUTOMATIC CONTROLLER FOR THE CLWT-067 CLOSED LOOP, BENCHTOP WIND TUNNEL

Custom built for the CLWT-067 closed loop wind tunnel, the CLWTC-1000™ is designed to automatically control the air flow and temperature through the test chamber. The controller is operated with a Windows PC (not included) to manage and measure air speed and air temperature, and to obtain continuous data on the devices under test.



The CLWTC-1000 controller features easy to use StageControl 1000™ software, a version of the proven software used with other ATS wind tunnel controllers. The controller provides the PC with a functioning Data Center for viewing information and monitoring events. The user can set a range of velocities at different temperatures from the software to run the wind tunnel automatically. The CLWTC-1000 also has manual controls to raise and lower the air temperature, in addition to changing temperature via the PC.



It is highly recommended that users of the CLWT-067 utilize the CLWTC-1000 Closed Loop Wind Tunnel Controller as it automates the control of temperature and velocity automatic and minimizes the chances for errors using multiple and/or less capable controlling devices.

The CLWTC-1000's interface is compatible with any Windows PC.

OVERALL DIMENSIONS (L X W X H)

34.3 cm x 25.4 cm x 17.8 cm
(13.5" x 10" x 7")

MATERIALS

SHEET METAL

WEIGHT

4.5 kg (10 lbs.)

FEATURES:

- » **Data Center**
View data and monitor events at the data center
- » **Temperature Control**
Precisely controls wind tunnel temperatures up to 85°C
- » **Velocity Control**
Controls the blower RPM and allows changes in air flow rates

APPLICATIONS:

- » **High Temperature Testing**
Users can evaluate the effects of elevated temperatures on component and PCB response and reliability
- » **Heat Sink Characterization**
Characterize a variety of heat sink sizes for low speed and forced convection cooling
- » **Sensor Calibration**
Precision temperature and velocity controls allow accurate calibration of sensors
- » **Component Testing**
An ideal test vehicle for individual or multiple component testing
- » **Multiple PCB Testing**
Test actual or simulated PCBs for thermal and flow distribution

For further technical information, please contact Advanced Thermal Solutions, Inc. at **1-781-769-2800** or **www.qats.com**