

# BGA Heat Sink - High Performance fanSINK™



**ATS Part#:** **ATS-61500D-C2-R0**  
**Description:** 53.00 x 53.00 x 9.50 mm BGA Heat Sink  
 High Performance fanSINK™ with Push Pin Attachment  
**Max. Component Size:** 40.00 x 40.00 mm  
**Heat Sink Type:** fanSINK  
**Heat Sink Attachment:** Push Pin  
**Equivalent Part Number:** N/A



Image for illustration purposes only.

## Features & Benefits

- » Cross-Cut straightFIN heatsink fins offer omnidirectional air flow for optimum thermal performance independent of PCB layout
- » Stainless steel screw fan attachment ensures dependable long-term fan to heat assembly. 4-40 thread screws are supplied: Modes D-R in 4 lengths (1/2", 3/4", 7/8", 1" Model W in 2 lengths (1", 1 1/8"). Contact ATS for custom options available.
- » Fan assembly hole pattern is 32 mm C-C (center to center) - see Fig. 1
- » Screw PEM push pin attachment included
- » Provided with pre-assembled Thermal Interface Material (TIM) centered on base.
- » Recommended through hole size in PCB is 3.00 mm
- » Please Note: FANS NOT INCLUDED. Fan type is specific to each customer application

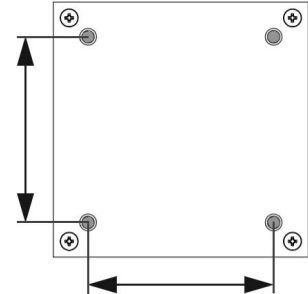
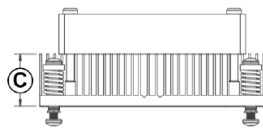
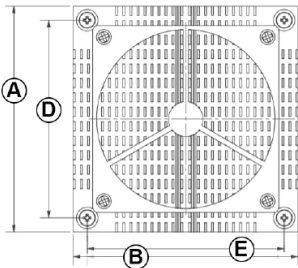


Fig. 1 - Measured dimensions of fan assembly hole pattern

Heat Sink Part No	L (mm)	W (mm)	H (mm)	Fan Sink Thermal Resistance (°C/W)			
ATS-61500D-C2-R0	53.0	53.0	9.5	1.80	1.80	1.35	1.35
ATS-61500K-C2-R0	53.0	53.0	14.5	1.09	1.10	0.90	0.89
ATS-61500R-C2-R0	53.0	53.0	19.5	0.82	0.82	0.67	0.65
ATS-61500W-C2-R0	53.0	53.0	24.5	0.66	0.67	0.56	0.56
FAN MANUFACTURER			Delta	Sunon	Delta	San Ace	
FAN PART NO.			AFB0412VHA-AF00	MF40101VX-10000-A99	AFB0612VHB-F00	9GA0412P7G001	
FAN SIZE (mm)			40 X 40 X 10	40 X 40 X 10	40 X 40 X 15	40 X 40 X 15	

## Product Details

SCHEMATIC IMAGE	Dimension A	Dimension B	Dimension C	Dimension D	Dimension E	TIM	Finish
	53 mm	53 mm	9.5 mm	44 mm	44 mm	Chomerics T766	Black



\*All Images are for illustration purposes only.

### NOTES:

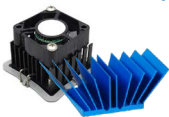
- 1) Fan not included. Fan type is specific to individual customer requirements and needs to be independently sourced.
- 2) Dimensions A and B refer to heat sink size.
- 3) Dimension C is the heat sink height from the bottom of the base to the top of the fin field.
- 4) Dimensions D and E refer to the push pin hole pattern C-C (center to center)
- 5) Thermal performance data are provided for reference only. Actual performance may vary by application.
- 6) ATS reserves the right to update or change its products without notice to improve the design or performance.
- 7) ATS certifies that this heat sink assembly is RoHS-6 and REACH compliant.
- 8) Contact ATS to learn about custom options available.

# BGA Heat Sink - High Performance fanSINK™ Series

PART NUMBER	HEAT SINK DIMENSIONS L x W x H (mm)	COMPONENT DIMENSIONS L x W (mm)	ATTACHMENT TYPE
ATS-61270D-C1-R0	27.0 x 27.0 x 9.5	27.0 x 27.0	Clip
ATS-61270K-C1-R0	27.0 x 27.0 x 14.5	27.0 x 27.0	Clip
ATS-61270R-C1-R0	27.0 x 27.0 x 19.5	27.0 x 27.0	Clip
ATS-61270W-C2-R0	27.0 x 27.0 x 24.5	27.0 x 27.0	Clip
ATS-61290D-C1-R0	29.0 x 29.0 x 9.5	29.0 x 29.0	Clip
ATS-61290K-C1-R0	29.0 x 29.0 x 14.5	29.0 x 29.0	Clip
ATS-61290R-C1-R0	29.0 x 29.0 x 19.5	29.0 x 29.0	Clip
ATS-61290W-C2-R0	29.0 x 29.0 x 24.5	29.0 x 29.0	Clip
ATS-61300D-C1-R0	30.0 x 30.0 x 9.5	30.0 x 30.0	Clip
ATS-61300K-C1-R0	30.0 x 30.0 x 14.5	30.0 x 30.0	Clip
ATS-61300R-C1-R0	30.0 x 30.0 x 19.5	30.0 x 30.0	Clip
ATS-61300W-C2-R0	30.0 x 30.0 x 24.5	30.0 x 30.0	Clip
ATS-61310D-C1-R0	31.0 x 31.0 x 9.5	31.0 x 31.0	Clip
ATS-61310K-C1-R0	31.0 x 31.0 x 14.5	31.0 x 31.0	Clip
ATS-61310R-C1-R0	31.0 x 31.0 x 19.5	31.0 x 31.0	Clip
ATS-61310W-C2-R0	31.0 x 31.0 x 24.5	31.0 x 31.0	Clip
ATS-61325D-C1-R0	32.5 x 32.5 x 9.5	32.5 x 32.5	Clip
ATS-61325K-C1-R0	32.5 x 32.5 x 14.5	32.5 x 32.5	Clip
ATS-61325R-C1-R0	32.5 x 32.5 x 19.5	32.5 x 32.5	Clip
ATS-61325W-C2-R0	32.5 x 32.5 x 24.5	32.5 x 32.5	Clip
ATS-61330D-C1-R0	33.0 x 33.0 x 9.5	33.0 x 33.0	Clip
ATS-61330K-C1-R0	33.0 x 33.0 x 14.5	33.0 x 33.0	Clip
ATS-61330R-C1-R0	33.0 x 33.0 x 19.5	33.0 x 33.0	Clip
ATS-61330W-C2-R0	33.0 x 33.0 x 24.5	33.0 x 33.0	Clip
ATS-61350D-C1-R0	35.0 x 35.0 x 9.5	35.0 x 35.0	Clip
ATS-61350K-C1-R0	35.0 x 35.0 x 14.5	35.0 x 35.0	Clip
ATS-61350R-C1-R0	35.0 x 35.0 x 19.5	35.0 x 35.0	Clip
ATS-61350W-C2-R0	35.0 x 35.0 x 24.5	35.0 x 35.0	Clip
ATS-61375D-C1-R0	37.5 x 37.5 x 9.5	37.5 x 37.5	Clip
ATS-61375K-C1-R0	37.5 x 37.5 x 14.5	37.5 x 37.5	Clip
ATS-61375R-C1-R0	37.5 x 37.5 x 19.5	37.5 x 37.5	Clip
ATS-61375W-C2-R0	37.5 x 37.5 x 24.5	37.5 x 37.5	Clip

PART NUMBER	HEAT SINK DIMENSIONS L x W x H (mm)	COMPONENT DIMENSIONS L x W (mm)	ATTACHMENT TYPE
ATS-61400D-C1-R0	40.0 x 40.0 x 9.5	40.0 x 40.0	Clip
ATS-61400K-C1-R0	40.0 x 40.0 x 14.5	40.0 x 40.0	Clip
ATS-61400R-C1-R0	40.0 x 40.0 x 19.5	40.0 x 40.0	Clip
ATS-61400W-C2-R0	40.0 x 40.0 x 24.5	40.0 x 40.0	Clip
ATS-61425D-C1-R0	42.5 x 42.5 x 9.5	42.5 x 42.5	Clip
ATS-61425K-C1-R0	42.5 x 42.5 x 14.5	42.5 x 42.5	Clip
ATS-61425R-C1-R0	42.5 x 42.5 x 19.5	42.5 x 42.5	Clip
ATS-61425W-C2-R0	42.5 x 42.5 x 24.5	42.5 x 42.5	Clip
ATS-61450D-C1-R0	45.0 x 45.0 x 9.5	45.0 x 45.0	Clip
ATS-61450K-C1-R0	45.0 x 45.0 x 14.5	45.0 x 45.0	Clip
ATS-61450R-C1-R0	45.0 x 45.0 x 19.5	45.0 x 45.0	Clip
ATS-61450W-C2-R0	45.0 x 45.0 x 24.5	45.0 x 45.0	Clip
ATS-61500D-C2-R0	53.0 x 53.0 x 9.5	40.0 x 40.0	Push Pin
ATS-61500K-C2-R0	53.0 x 53.0 x 14.5	40.0 x 40.0	Push Pin
ATS-61500R-C2-R0	53.0 x 53.0 x 19.5	40.0 x 40.0	Push Pin
ATS-61500W-C2-R0	53.0 x 53.0 x 24.5	40.0 x 40.0	Push Pin
ATS-61600D-C2-R0	63.0 x 63.0 x 9.5	50.0 x 50.0	Push Pin
ATS-61600K-C2-R0	63.0 x 63.0 x 14.5	50.0 x 50.0	Push Pin
ATS-61600R-C2-R0	63.0 x 63.0 x 19.5	50.0 x 50.0	Push Pin
ATS-61600W-C2-R0	63.0 x 63.0 x 24.5	50.0 x 50.0	Push Pin
ATS-61700D-C2-R0	74.0 x 74.0 x 9.5	60.0 x 60.0	Push Pin
ATS-61700K-C2-R0	74.0 x 74.0 x 14.5	60.0 x 60.0	Push Pin
ATS-61700R-C2-R0	74.0 x 74.0 x 19.5	60.0 x 60.0	Push Pin
ATS-61700W-C2-R0	74.0 x 74.0 x 24.5	60.0 x 60.0	Push Pin
ATS-61800D-C2-R0	84.0 x 84.0 x 9.5	70.0 x 70.0	Push Pin
ATS-61800K-C2-R0	84.0 x 84.0 x 14.5	70.0 x 70.0	Push Pin
ATS-61800R-C2-R0	84.0 x 84.0 x 19.5	70.0 x 70.0	Push Pin
ATS-61800W-C2-R0	84.0 x 84.0 x 24.5	70.0 x 70.0	Push Pin

**ATS is a leading-edge engineering and manufacturing company focused on the complex thermal management issues of electronics cooling. Our goal is to be our customers' value-added supplier and success partner for all thermal management needs: analysis, testing & final product.**



Heat Sinks



Instruments



Wind Tunnels



Liquid Cooling



Heat Pipes



Thermoelectric Coolers



VOSTOK Freezers



VortX Air Cleansers



For further technical information, please contact Advanced Thermal Solutions, Inc.

89-27 ACCESS ROAD, NORWOOD, MA 02062 USA | T: 781.769.2800 | ATS-HQ@QATS.COM | WWW.QATS.COM