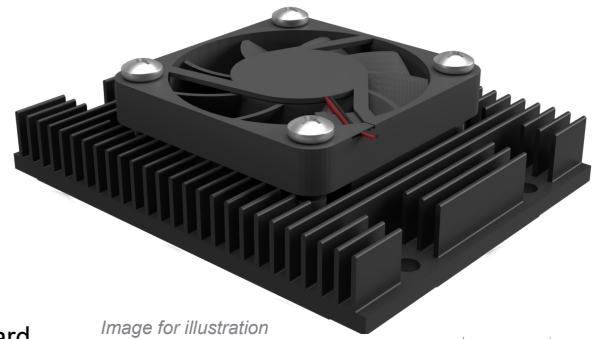


Heat Sink for AMD Kria™ K26 SOM



ATS Part#: **ATS-KRA-3567-C1-R0**
Description: 54 x 68 x 10 mm high-performance heat sink
Component: AMD Kria™ K26 SOM
Heat Sink Type: Active straight fin heat sink
Heat Sink Attachment: Screws



Product Details and Assembly

- » Designed to fit the AMD Kria™ System-on-Module (SOM)
- » Included mounting hardware kit: ATS-HK544-R0
- » Heat sink mounts directly to the heat spreader plate that comes standard on the K26 SOM
- » Fan assembly hole pattern is 32.0 mm C-C (center to center) - see Fig. 2
- » Included fan attachment kit (10mm fan height): ATS-HK546-R0
- » Fan not included - ATS recommended fans listed below
- » Provided with pre-assembled Thermal Interface Material (TIM) on base

Image for illustration purposes only.

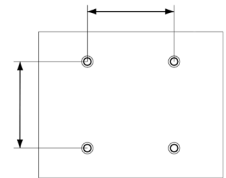


Fig. 2 - Measured dimensions of fan assembly hole pattern

Heat Sink Part Number	L (mm)	W (mm)	H (mm)	Heat Sink Weight (g)	Thermal Interface Material
ATS-KRA-3567-C1-R0	54	68	10	45	Chomerics T766

Recommended Fans

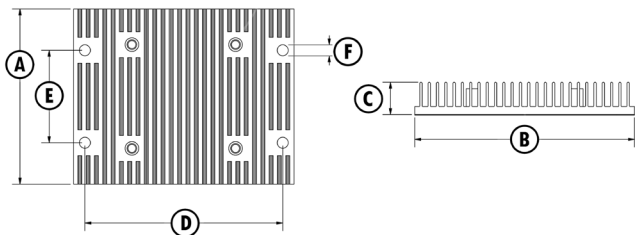
Part Number	MFG	L (mm)	W (mm)	H (mm)	Voltage (VDC)	Air Flow (CFM)	Static Pressure (Pa)
MF40060V1-10000-A99	Sunon	40	40	6.5	5	6.3	24.9
MF40101VX-10000-A99	Sunon	40	40	10	12	9.9	62.2
AFB0405VHA-A	Delta	40	40	10	5	9.5	63.01
AFB0412VHA-A	Delta	40	40	10	12	9.5	63.01

Product Details

SCHEMATIC IMAGE	Dimension A	Dimension B	Dimension C	Dimension D	Dimension E	Dimension F	Fan Assembly Hole Pattern	Material	Finish
	54 mm	68 mm	10 mm	61 mm	28.5 mm	3.4 mm	32.0 mm center-to-center	AL-6063	Black Anodized

NOTES:

- 1) Fan not included - Fan type is specific to individual customer requirements and needs to be independently sourced
- 2) Dimensions A and B refer to heat sink size
- 3) Dimension C is the heat sink height from the bottom of the base to the top of the fin field.
- 4) Dimensions D and E refer to the mounting hole pattern C-C (center to center)
- 5) Dimension F refers to the mounting hole diameter
- 6) Thermal performance data are provided for reference only. Actual performance may vary by application.
- 7) ATS reserves the right to update or change its products without notice to improve the design or performance.
- 8) ATS certifies that this heat sink assembly is RoHS-6 and REACH compliant.
- 9) Contact ATS to learn about custom options available.



*All Images are for illustration purposes only.

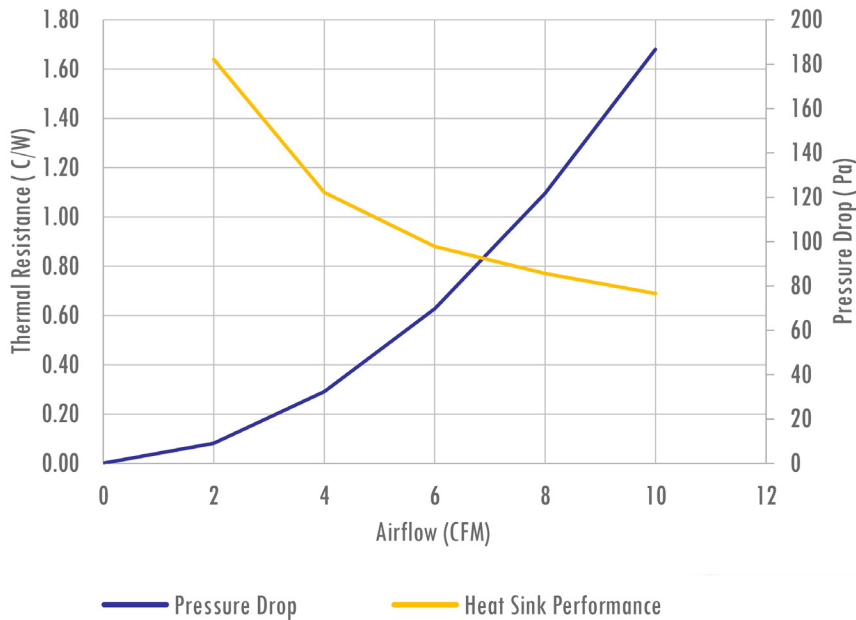


For further technical information, please contact Advanced Thermal Solutions, Inc.

89-27 ACCESS ROAD, NORWOOD, MA 02062 USA | T: 781.769.2800 | ATS-HQ@QATS.COM | WWW.QATS.COM

Performance

System Curve for ATS-KRA-3567-C1-R0



ATS-KRA-3567-C1-R0 Performance	
Fan Flow Rate (CFM)	Thermal Resistance (°C/W)
2	1.64
4	1.10
6	0.88
8	0.77
10	0.69

Heat Sinks for AMD Kria™ K26 SOM

	Heat Sink Type	Heat Sink Part Number	L (mm)	W (mm)	H (mm)	Weight (g)	Thermal Resistance of 1.2 °C/W *
	Passive Straight Fin Heat Sink	ATS-KRP-3559-C1-R0	54	68	20	69	Achieved at 100 LFM
	Passive maxiFLOW Heat Sink	ATS-KRP-3561-C1-R0	54	68	9.76	34	Achieved at 300 LFM
	Passive maxiFLOW Heat Sink	ATS-KRP-3563-C1-R0	54	68	25	61	Achieved at 100 LFM
	Passive Straight Fin Heat Sink	ATS-KRP-3567-C1-R0	54	68	10	44	Achieved at 200 LFM
	Active Straight Fin Heat Sink	ATS-KRA-3559-C1-R0	54	68	20	63	Achieved with fan at 3 CFM
	Active Low Profile Straight Fin Heat Sink	ATS-KRA-3567-C1-R0	54	68	10	45	Achieved with fan at 4 CFM

*Calculated resistance is at 55°C ambient and 15W of total power

RI_0125