

# BGA Heat Sink (High Aspect Ratio Ext.) Slant Fin

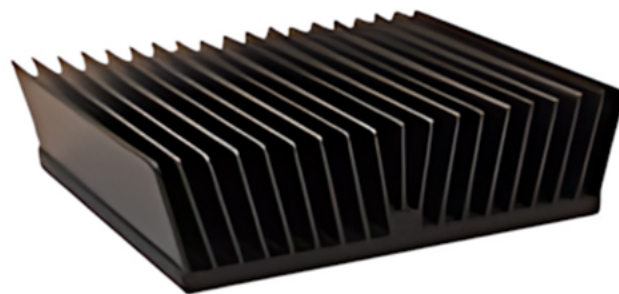
**ATS Part#:** **ATS010010025-MF-1X**

**Description:** 10 X 10 X 25 mm  
BGA Heat Sink (High Aspect Ratio Ext.) Slant Fin

**Component:** N/A

**Heat Sink Type:** Slant Fin

**Heat Sink Attachment:** N/A



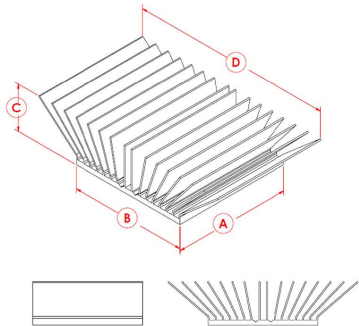
*Images for illustration purposes only.*

- » Features a low profile, slant fin array that offers many of the performance benefits of **maxiFLOW™** at a great value
- » Fabricated from extruded aluminum, which minimizes thermal resistance from the base to the fins, reduces weight and keeps costs low
- » Higher performance helps ensure reliable product life at a lower cost than other extruded heat sinks
- » Comes standard without interface material or with most common pressure sensitive thermal tapes as a custom option

## Thermal Performance

AIR VELOCITY THERMAL RESISTANCE	@200 LFM 1.0 M/S	@300 LFM 1.5 M/S	@400 LFM 2.0 M/S	@500 LFM 2.5 M/S	@600 LFM 3.0 M/S	@700 LFM 3.5 M/S	@800 LFM 4.0 M/S
Unducted Flow (°C/W)	13.1	10.8	9.6	8.7	8.1	7.6	7.2
Ducted Flow (°C/W)	9.8	8.5	7.7	7.1	6.6	6.3	6.0

## Product Details

SCHEMATIC IMAGE	Dimension A	Dimension B	Dimension C	Dimension D	TIM	Finish
	10.0 mm	10.0 mm	25.0 mm	9.7 mm	N/A	BLACK-ANODIZED

### NOTES:

- 1) Dimension A and B refer to component size
- 2) Dimension C is the heat sink height from the bottom of the base to the top of the fin field.
- 3) Dimension D is fin tip to fin tip.
- 4) Thermal performance data are provided for reference only. Actual performance may vary by application.
- 5) ATS reserves the right to update or change its products without notice to improve the design or performance.
- 6) ATS certifies that this heat sink assembly is RoHS and REACH compliant.
- 7) Contact ATS to learn about custom options available.

*\*All Images are for illustration purposes only.*

