

BGA Heat Sink (High Aspect Ratio Ext.) Slant Fin

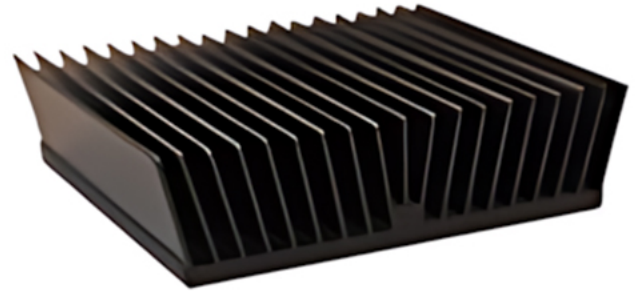
ATS Part#: **ATS042042011-MF-14J**

Description: 42 X 42 X 11 mm
BGA Heat Sink (High Aspect Ratio Ext.) Slant Fin

Component: N/A

Heat Sink Type: Slant Fin

Heat Sink Attachment: N/A



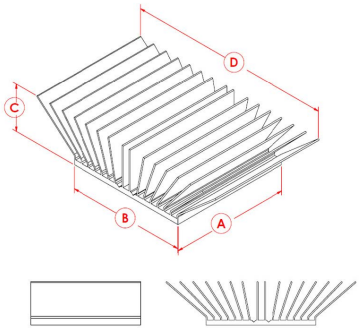
Images for illustration purposes only.

- » Features a low profile, slant fin array that offers many of the performance benefits of **maxiFLOW™** at a great value
- » Fabricated from extruded aluminum, which minimizes thermal resistance from the base to the fins, reduces weight and keeps costs low
- » Higher performance helps ensure reliable product life at a lower cost than other extruded heat sinks
- » Comes standard without interface material or with most common pressure sensitive thermal tapes as a custom option

Thermal Performance

AIR VELOCITY THERMAL RESISTANCE	@200 LFM 1.0 M/S	@300 LFM 1.5 M/S	@400 LFM 2.0 M/S	@500 LFM 2.5 M/S	@600 LFM 3.0 M/S	@700 LFM 3.5 M/S	@800 LFM 4.0 M/S
Unducted Flow (°C/W)	7.0	4.0	2.9	2.3	2.0	1.8	1.6
Ducted Flow (°C/W)	2.1	1.7	1.5	1.3	1.2	1.2	1.1

Product Details

SCHEMATIC IMAGE	Dimension A	Dimension B	Dimension C	Dimension D	TIM	Finish
	42.0 mm	42.0 mm	11.0 mm	44.4 mm	N/A	BLACK-ANODIZED

NOTES:

- 1) Dimension A and B refer to component size
- 2) Dimension C is the heat sink height from the bottom of the base to the top of the fin field.
- 3) Dimension D is fin tip to fin tip.
- 4) Thermal performance data are provided for reference only. Actual performance may vary by application.
- 5) ATS reserves the right to update or change its products without notice to improve the design or performance.
- 6) ATS certifies that this heat sink assembly is RoHS and REACH compliant.
- 7) Contact ATS to learn about custom options available.

*All Images are for illustration purposes only.

