



DC Fan Blower

Description:

Fan Blower 12VDC Rectangular/Rounded - 92.1mm L x 90.14mm W Ball 20.28 CFM (0.57 m³/min) 4 Wire Leads

Part Number: ATS-B90151211BA-C1-R1

Attachment Method: Underside screws



*Image is for illustration purposes only.

PERFORMANCE DATA

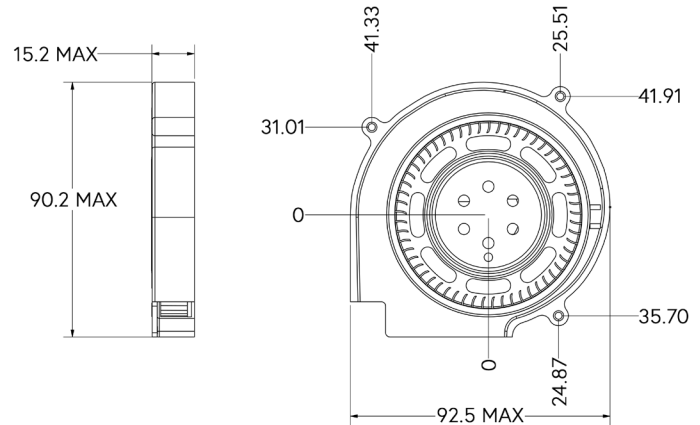
Operating Voltage	8~13.5 VDC
Rated Voltage	12 VDC
Starting Voltage	<8 VDC
Rated Current	1.25A (Max: 2.5A)
Power Consumption	15W (Max: 30W)
Speed	5000 ±10% RPM
Airflow	20.28 CFM (Min: 18.25 CFM)
Static Pressure	42.41 mmH2O (Min: 38.16 mmH2O)
Noise Level	58.1dB (Max: 60.0dB)

TECHNICAL DATA

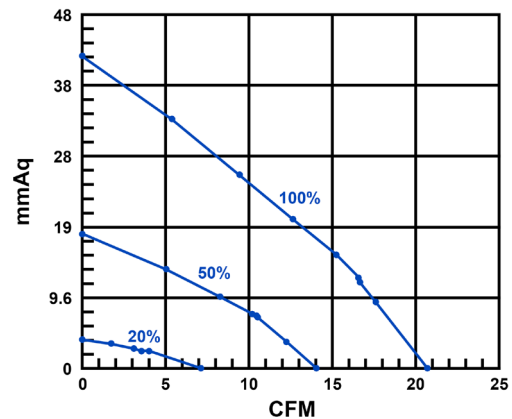
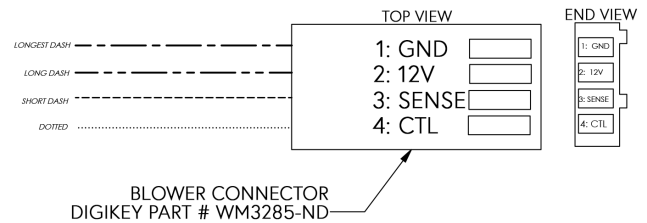
Dimensions	92.1 x 90.14 x 15mm
Weight	90 g
Impeller Material	PBT
Housing Material	Aluminum
Bearing Type	Ball Bearing
Lead Wire	UL1332 24 Gauge
Service Life at 40°C	70,000 hours
Lock Protection	Auto power off - after 2~3 seconds
Polarity Protection	Open circuit when Vcc & GND engaged
Over-voltage Protection	Will turn off when exceeding 18V
Over-current Protection	Yes
Fixed Constant Speed	Yes
Soft Starting Function	Yes
PWM Function	Yes
Insulation Resistance	10MΩ , 500 VDC/min
Dielectric Strength	5Ma , 500 VAC/min
Waterproof Level	IPX0

ENVIRONMENTAL SPECIFICATIONS

Operating Temp. Range	-10°C ~ 70°C
Storage Temperature	-40°C ~ 75°C
Humidity	5% ~ 95% RH
Thermal Shock	MIL-STD 202F
Insulation Shock	UL: Class A
Packing Vibration Test	3.2G Load for 30 Minutes - No Damage
Packing Shock Proof Test	60cm Drop - No Damage



ENLARGED BLOWER CONNECTOR VIEW



NOTES:

- Before use, ensure the supply voltage meets the specifications of the blower.
- Do not store the blower in a high humidity environment. For long term storage, connect the blower to power every 6 months even when in a proper environment.
- The fan connector can be mated to a system in the following ways: via a computer motherboard's included 4-pin header, to a standard 4-pin fan header such as the Molex 0470531000 or a standard 3-pin fan header. If a 3-pin header is used, the speed control option cannot be accessed.
- Lead wires: Pin 1-Black (-), Pin 2-Red (+12V), Pin 3-Yellow (Tach), Pin 4-Blue (PWM)
- ATS reserves the right to update or change its products without notice to improve the design or performance
- RoHS-6 and REACH compliant



ATS ADVANCED THERMAL SOLUTIONS, INC.
Innovation in Thermal Management®

For further technical information, please contact Advanced Thermal Solutions, Inc.

89-27 ACCESS ROAD, NORWOOD, MA 02062 USA | T: 781.769.2800 | WWW.QATS.COM | ATS-HQ@QATS.COM