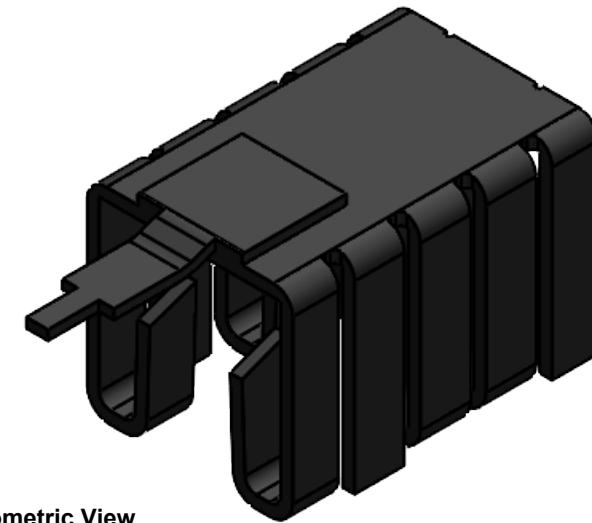
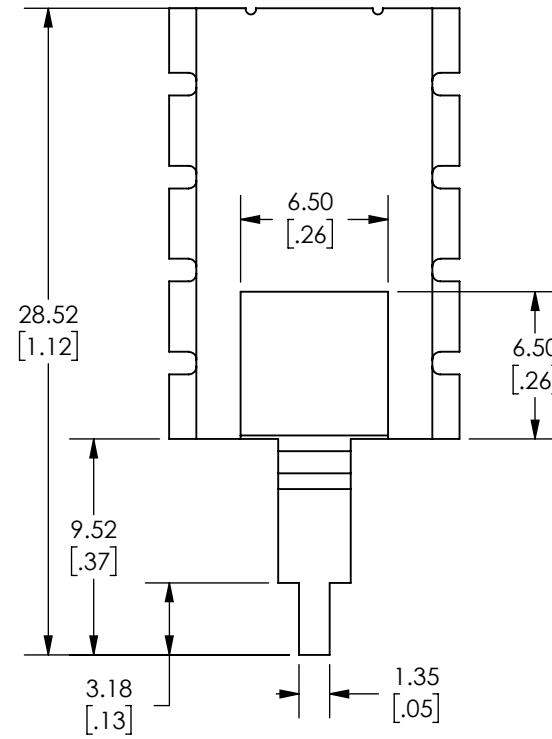


- NOTES:
- SUPPLIER CERTIFIES PRODUCT IS ROHS COMPLIANT.
 - REMOVE ALL BURRS & SHARP EDGES.
 - ESTIMATED MASS: 1.73 GRAMS

REVISIONS		
REV.	DESCRIPTION	DATE
R0	ORIGINAL DESIGN	

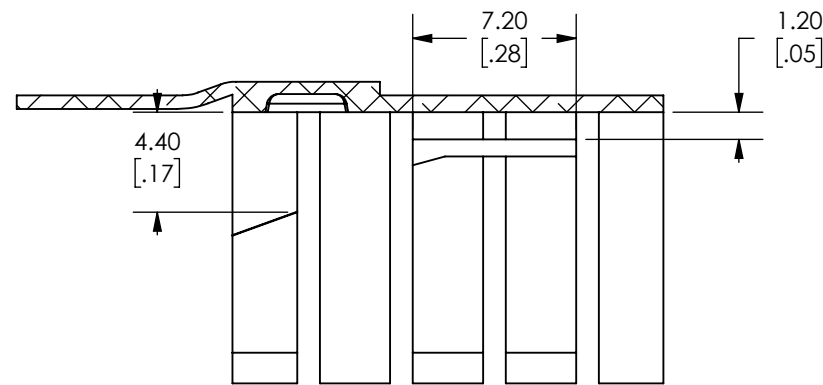


Isometric View
NTS

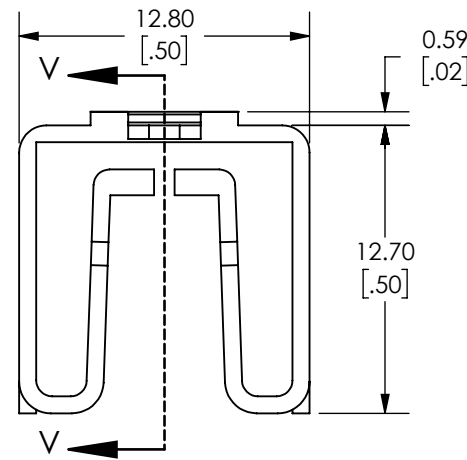


Top View

Scale 3:1

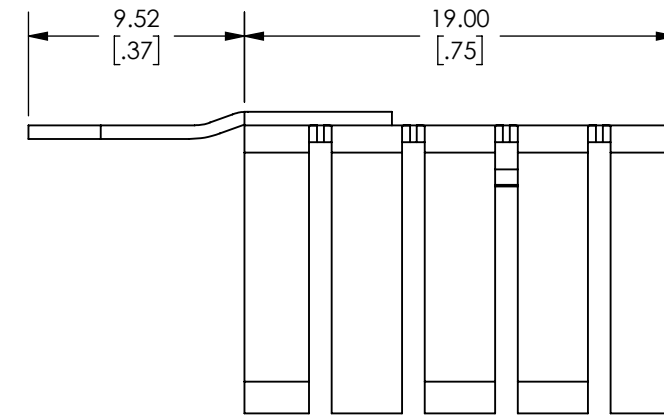


SECTION V-V



Front View

Scale 3:1



Side View

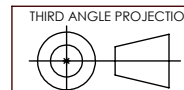
Scale 3:1



89-27 Access Road
Norwood MA, 02062

DWN: FW	DESIGNER: FW	APPROVED / RELEASED FOR ATS MANUFACTURE:
DESCRIPTION: HEAT SINK		

TOLERANCE:
UNLESS OTHERWISE SPECIFIED:
X.X +/- 0.5mm
X.XX +/- 0.25mm
X.XXX +/- 0.125mm
ANGLES +/- 1°



DRW UNITS: MM(IN)	DWG. NO. ATS-PCB1002
SCALE: NTS	FINISH: BLACK ANODIZED

MATERIAL: ALUMINUM 6063	LEVEL: --
----------------------------	--------------

DATE: 6/10/2020	SHEET# 1 OF 1
--------------------	------------------