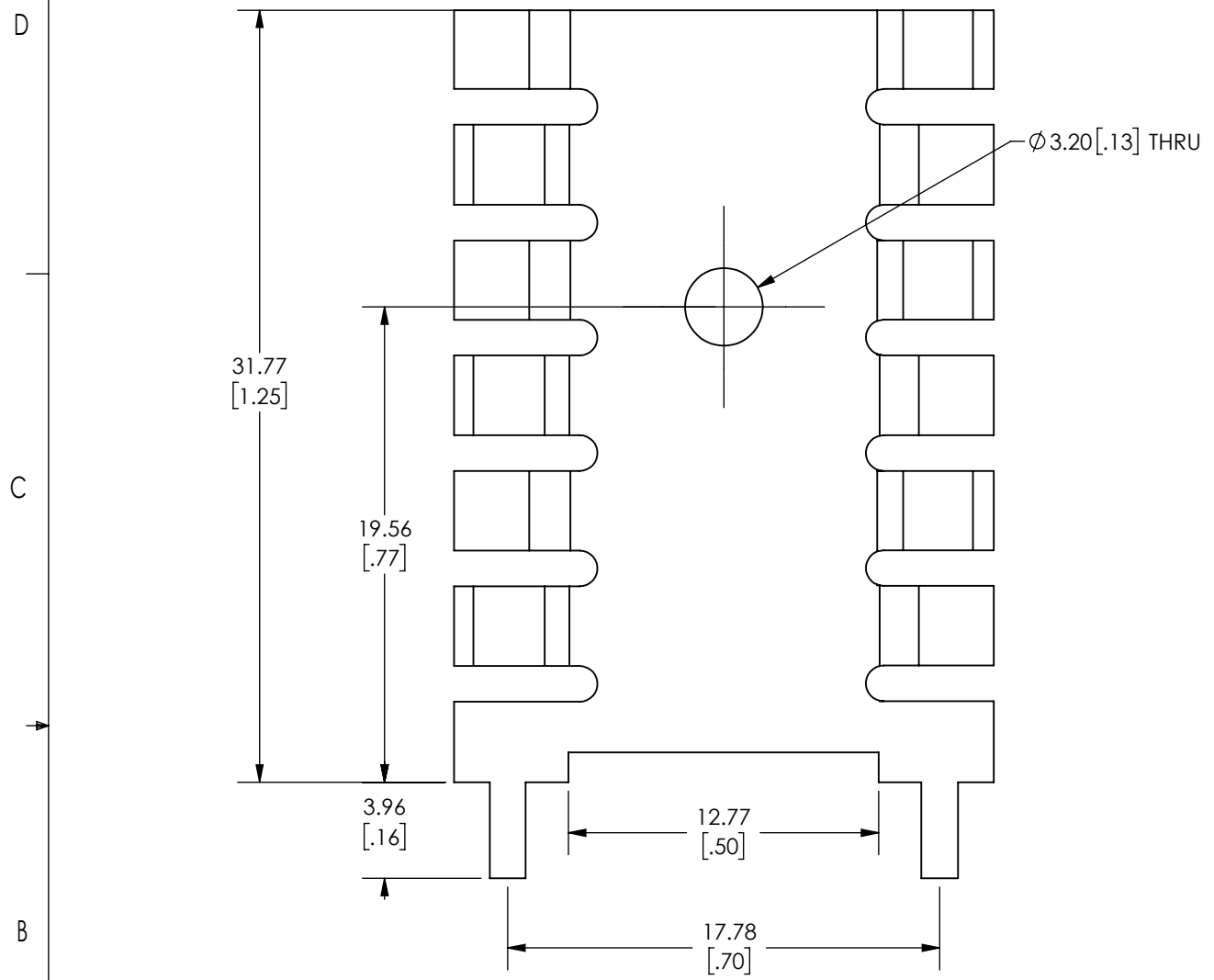


Advanced Thermal Solutions, Inc
PROPRIETARY

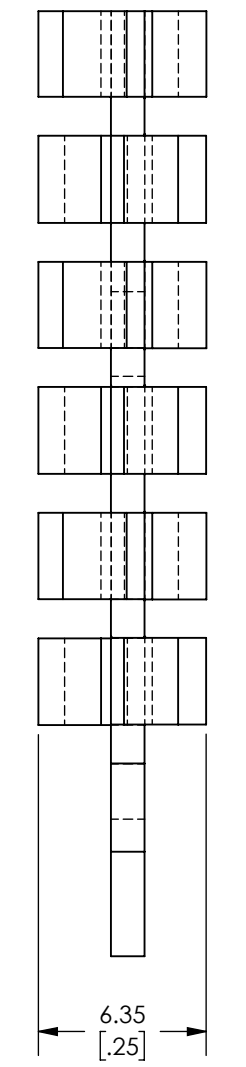
- NOTES:
- SUPPLIER CERTIFIES PRODUCT IS ROHS COMPLIANT.
 - REMOVE ALL BURRS & SHARP EDGES.
 - ESTIMATED MASS: 6.96 GRAMS

REVISIONS		
REV.	DESCRIPTION	DATE
R0	ORIGINAL DESIGN	

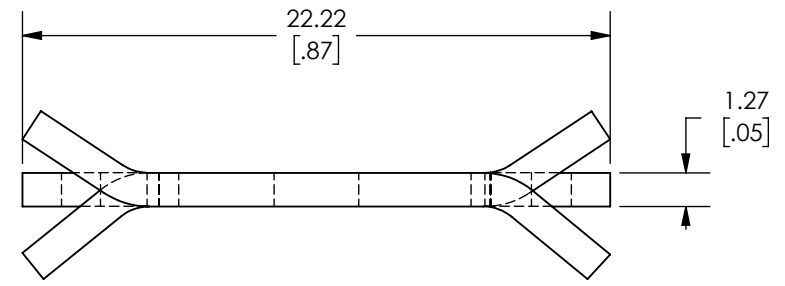
10.08.20



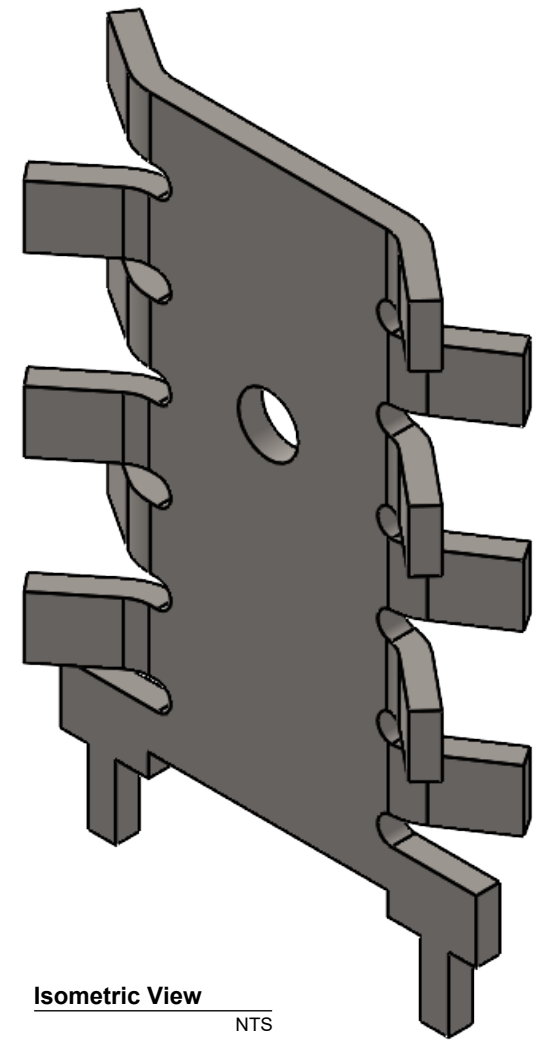
Front View
Scale 7:2



Side View
Scale 7:2



Bottom View
Scale 7:2



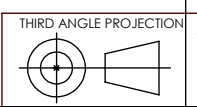
Isometric View
NTS



89-27 Access Road
Norwood MA, 02062

DWN: FW	DESIGNER: FW	APPROVED / RELEASED FOR ATS MANUFACTURE:
DESCRIPTION: HEAT SINK		

TOLERANCE:
UNLESS OTHERWISE SPECIFIED:
X.X +/- 0.5mm
X.XX +/- 0.25mm
X.XXX +/- 0.125mm
ANGLES +/- 1°



DRW UNITS: MM(IN)	DWG. NO. ATS-PCB1058
SCALE: NTS	FINISH: TIN PLATED

MATERIAL: COPPER	LEVEL --	DATE: 6/10/2020
		SHEET# 1 OF 1

THE DRAWING SHOWN WITHIN IS PROTECTED BY PATENTS GRANTED, AND/OR COPYRIGHT ©, TO ADVANCED THERMAL SOLUTIONS, INC.

This confidential document is the sole property of Advanced Thermal Solutions (ATS). It is prohibited to reproduce or distribute this information, in whole or part, to other parties without the prior written consent of ATS.

ATS-PCB1058