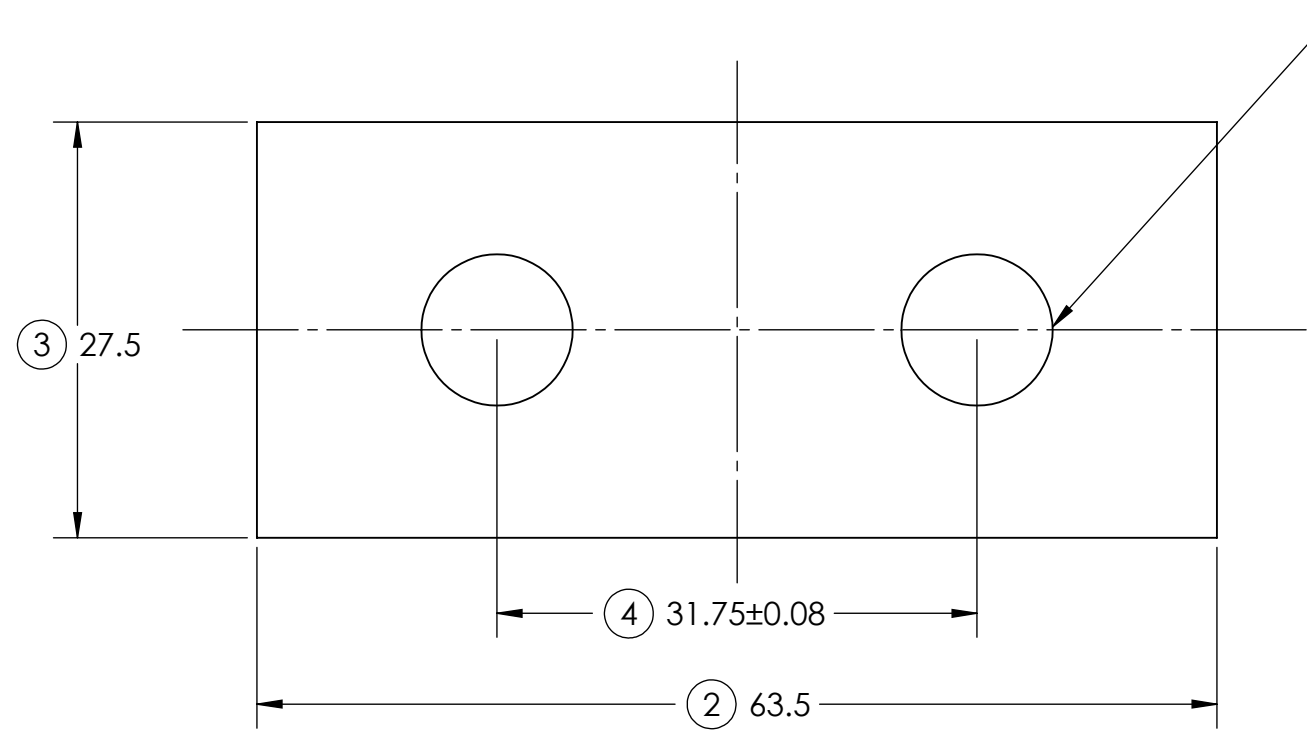
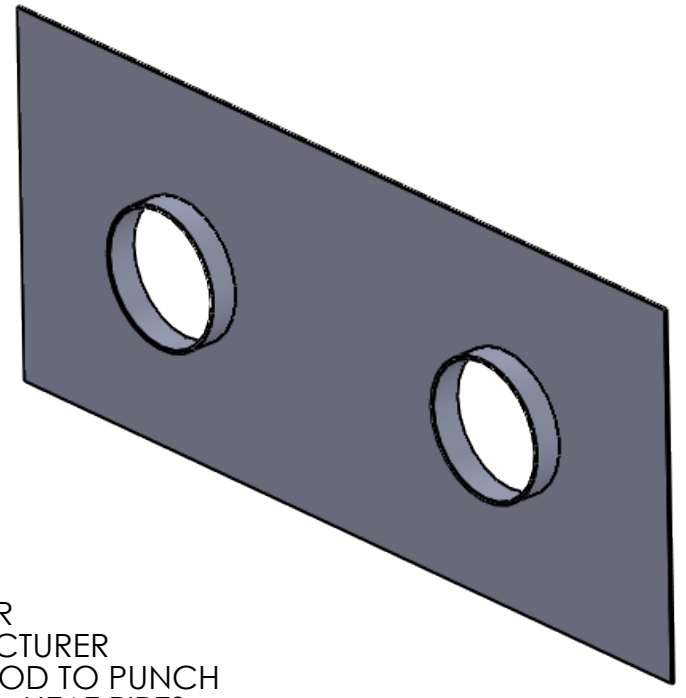
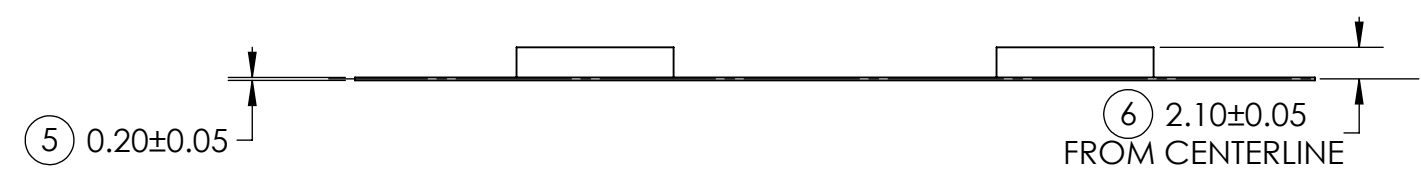


ATS-ZF-063027B2-P2-TB-R4

**Advanced Thermal Solutions, Inc**  
**PROPRIETARY**


- NOTES:
1. TOLERANCES X.X +/- 0.30 MM, X.XX +/- 0.25 MM, X.XXX +/- 0.125 MM UNLESS SHOWN OTHERWISE.
  2. SUPPLIER CERTIFIES PRODUCT IS ROHS COMPLIANT.
  3. REMOVE ALL BURRS & SHARP EDGES.
  4. USE PIERCE AND DRAW METHOD TO PUNCH HOLES.

REVISIONS		
REV.	DESCRIPTION	DATE
R1	ORIGINAL DESIGN	06/20/16
R2	CHANGED THICKNESS FROM 0.15mm TO 0.20mm	07/11/16
R3	CHANGED FINISH	07/28/16
R4	CHANGED TO FIT 10mm HEAT PIPE	01/16/18



INSIDE DIAMETER  
DECIDED BY MANUFACTURER  
USE PIERCE AND DRAW METHOD TO PUNCH  
HOLES TO FIT OVER Ø 10mm HEAT PIPES

This confidential document is the sole property of Advanced Thermal Solutions (ATS). It is prohibited to reproduce or distribute this information, in whole or part, to other parties without the prior written consent of ATS.

	<b>Advanced Thermal Solutions, Inc</b> 89 Access Road #27 Norwood MA, 02062		DWN: CAH	DESIGNER: PK	APPROVED /RELEASED FOR ATS MANUFACTURE: LC 01/30/2018	SCALE: NTS	DATE: 01/25/2018	DWG. NO. ATS-ZF-063027B2-P2-TB-R4	LEVEL --
	DESCRIPTION: ZIPPER FIN					TOLERANCE: AS SPECIFIED	FINISH: NICKEL PLATED ①	MATERIAL: ALUMINUM 1050 OR 1060	DRW UNITS: MM(IN)

THE DRAWING SHOWN WITHIN IS PROTECTED BY PATENTS GRANTED TO ADVANCED THERMAL SOLUTIONS, INC.

Tuesday, January 30, 2018

ATS-ZF-063027B2-P2-TB-R4