



LED COOLING

- STAR heat sinks are designed for cooling high heat flux LEDs
- STAR LEDs are offered with inner and outer threads for the attachment of lens mounts, brackets & other hardware
- Linear LED heat sinks are designed for cooling LED lighting strips
- Linear LEDs have a maxiFLOW™ design, reducing temperatures by 50%
- All STAR and Linear LED heat sinks are available in extrusions and can be customized to any length

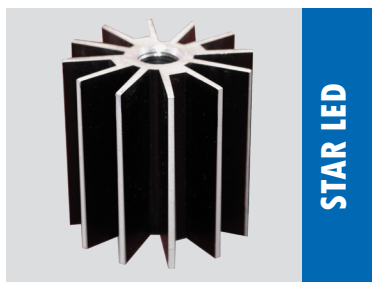
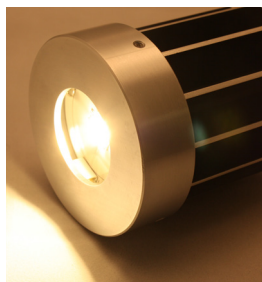
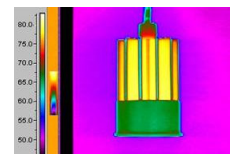
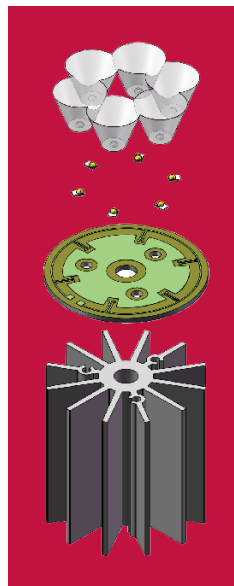


Reduces LED temperatures by

50%



Linear LED



STAR LED



For further technical information, call 781.769.2800, email ats-hq@qats.com or visit qats.com